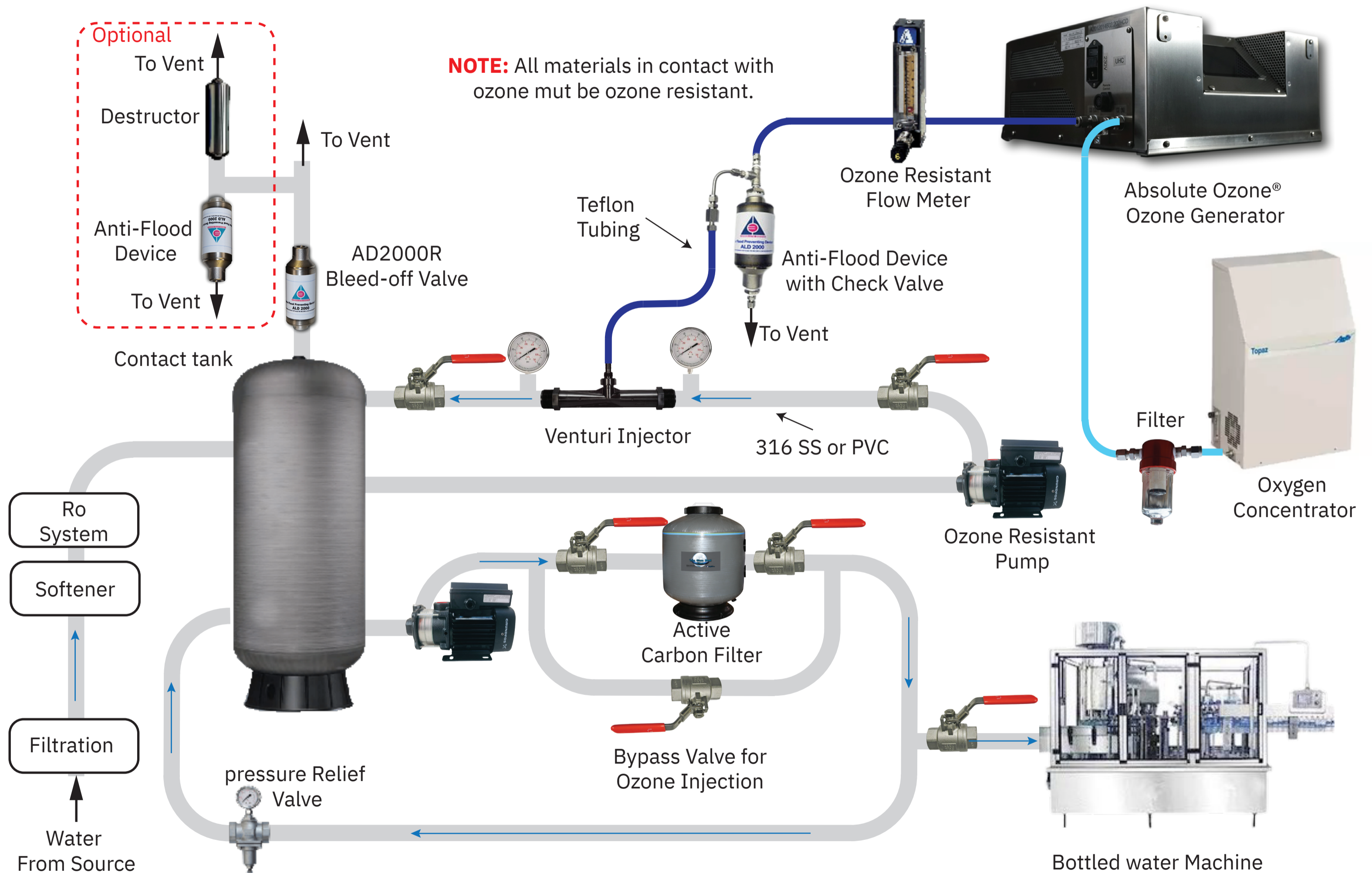


Ozone for Bottled Water System Diagram



NOTE: All materials in contact with ozone must be ozone resistant.

Attention: All Absolute Ozone® generators are designed to work without service, maintenance, or spare parts, for the first 20 years of use if they are installed correctly

For a good generator performance, it is important to place the generator in a well-ventilated, dust free environment, and maintain the ambient temperature at 20-22 °C